

# Joint Almoner and Charity Stewards Conference 2024

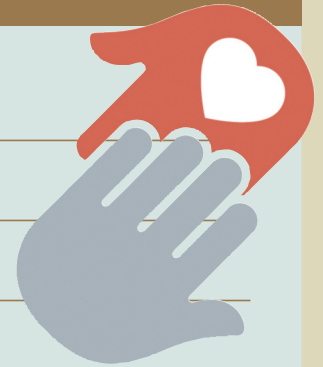


**SUNDAY 13TH OCTOBER**  
**9.30am - 12.30pm**

**Ashlar House, 23 Eastern Way, Bury St Edmunds IP32 7AB**

## TIME CONTENT

8.30 am	Registration and Breakfast
9.40 am	Session 1 - Welcome
9.45 am	Session 2 - Festival Update
10.05 am	Session 3 - Relief Chest Scheme, Envelope Guidance
10.30 am	Session 4 - Charity Impact case studies
11.00 am	Session 5 - Suffolk Almoner Service Update
11.20 am	Session 6 - Compassionate Conversations
11.45 am	Session 7 - Almoner Impact case studies
12.15 am	Final Questions
12.30 am	Conference Close
1.00 pm	Three Course Sunday Lunch



**SAVE  
THE  
DATE!**  
13th October  
2024

### Who Should Attend:

- Lodge Almoners, Charity Stewards & their partners
- All Freemasons who are interested in charity and pastoral care
- Lodge WM/Chapter MES and their wives/partners
- Visiting Officers and their wives and partners
- Provincial Group Almoner Team and their wives/partners/husbands
- Festival 2029 Fundraising team and their wives & partners
- Provincial Chains
- Exhibitors
- Heads of Suffolk Progressive Degrees

### Why should delegates attend and what will they learn:

- Get an update on the festival 2029
- Understand how to set up and manage a Relief Chest
- Appreciate the impact of charitable grants
- Get an update on the work of the Provincial Almoner Team
- Learn about how to undertake Compassionate Conversations
- See the impact of support from the Provincial Almoner Team & MCF

